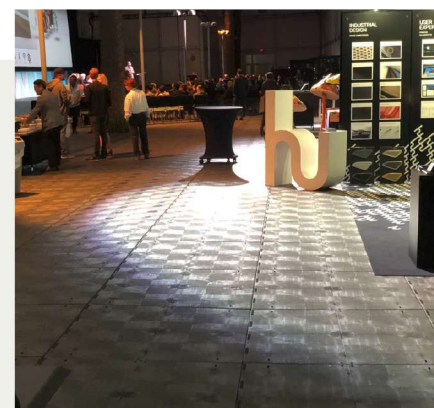
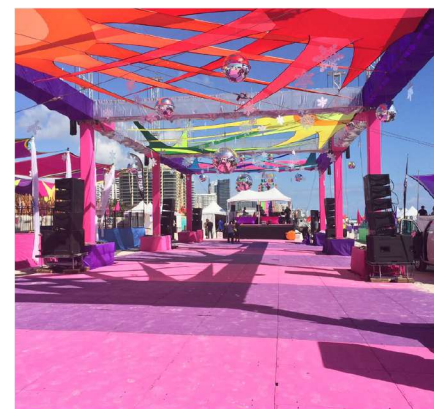




272 James Burr Blvd.  
Kearneysville, WV 25430  
888-828-9535 | [info@duratrac.net](mailto:info@duratrac.net)  
f in  [duratrac.net](https://www.youtube.com/duratrac)

**Dura-Trac™** is a revolutionary flooring system designed specifically for the special events industry by special events flooring experts. Made from HDPE plastic, our durable temporary flooring creates a stable walking, gathering, or performance surface for your guests.

- Modular flooring that is secured with Sur-Loc cams to stabilize and secure the flooring.
- Designed to handle heavy duty loads: Up to 50,000 lbs per square foot on bearing ground and 1,000 lbs per square foot elevated.
- Self-stabilizing to create a safe anti-slip surface to walk or drive on including turf, soil, sand, gravel, snow, tarmac, and concrete.
- Durable quality you can rely on: Corrosion and chemical resistance that holds up in temperatures ranging from -10 to 110 degrees Fahrenheit.
- Save time and money with an installation rate of 2,500 square feet per hour with four people and a recovery rate of 3,500 square feet per hour with three people.
- Proudly made in the USA.
- Eco Friendly Design made with 50% recycled materials, plus all panels are 100% recyclable.
- Unmatched customer service and support.

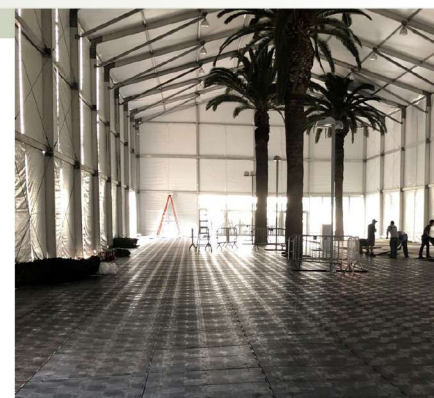


#### USED IN:

- Concerts
- Festivals
- Commencement Ceremonies
- Monster Truck and Motocross Racing
- Specialty Sporting Events (Hockey, UFC, Boxing)
- Turf Protection
- Weddings
- Corporate and Private Events
- Trade Shows
- Disaster Relief
- Tent Events

“Price, availability, ergonomic characteristics, performance, aesthetics and the burden which our existing flooring places on my staff. We had entertained several versions of flooring, ultimately the Dura-Trac price point, availability to rent v. purchase and comparable characteristics to its competition were the main deciding factors which pushed us to Dura-Trac.”

*-Taylor Clay, Facilities Manager, Intercollegiate Athletics, University of Washington*



## Dura-Trac® SB

### Rugged Use Temporary Flooring

*Dura-Trac® SB flooring panels* feature a solid back that is hot-plate welded to the understructure, making it impervious to dirt, water, and other debris.

*Dura-Trac® SB panels* are ideal for use in areas requiring extra protection from heavy equipment and vehicle traffic, such as military services and temporary roadways. Combine with Dura-Trac® SE to transition from heavy to light applications seamlessly.

*Temporary flooring designed for maximum strength, safety and ease of use.*

Installs and disassembles quickly and easily with our patented Slide-and-Lock technology.

Full suite of edge and ramp solutions available for pedestrian and ADA compliant access.

Easy to clean using our compatible *DuraWash 2300* panel-washing system.

Use for

- Turf protection
- Work platforms
- Playing surface for sporting events
- Tents, structure, and concert flooring
- Temporary parking lots
- Temporary warehouse flooring
- Temporary roadways for heavy duty equipment

Reliability  
you can  
**walk, drive  
and play on.**

#### COLORS

- ✓ Charcoal Gray
- ✓ Translucent
- ✓ Custom Colors

*Available upon request.  
Prices may vary.*

#### Eco-friendly

Dura-Trac® SE and SB charcoal panels are constructed with more than **50% recycled material**.

*All Panels are 100% Recyclable.*

 *Made in the USA.*



888-828-9535

DuraTrac.net | info@DuraTrac.net



A SUCCESSFUL EVENT  
STARTS FROM THE  
GROUND UP

## Dura-Trac® SE

### Special Events Temporary Flooring

Dura-Trac® SE flooring panels feature an open-back system that allows for even weight distribution across the panel, providing greater load capacity than comparative systems. The lightweight panels, weighing only 50 lbs each, are designed to handle loads of 25,000 lbs/ft<sup>2</sup> on bearing ground.

Combine with Dura-Trac® SB to transition from light to heavy applications seamlessly.

### Speed of install. Strength. Durability.

*Engineered to be the only modular flooring system you'll ever need.*

Patented slide lock flooring system is self-aligning and allows for adjacent panels to fit together seamlessly

Prevents damage to any turf by providing optimal air circulation and water venting; *translucent panels* enable the sun to penetrate it easily

Can be custom cut to contour any layout design and accommodates undulating surfaces

Use for

Turf protection (*translucent*)

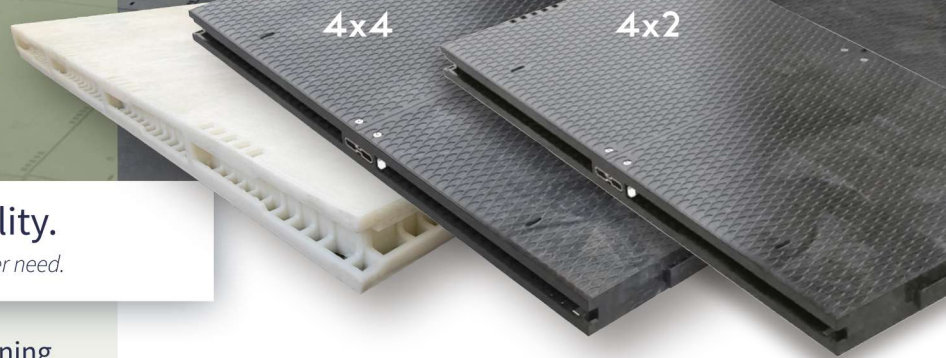
Work platforms

Pedestrian traffic

Light duty equipment

Tents, structure, and concert flooring

Reliability  
you can  
**entertain,  
dance and  
cheer on.**



SIZES

- ✓ 4x4
- ✓ 4x2

COLORS


- ✓ Charcoal Gray
- ✓ Translucent
- ✓ Custom Colors

*Available upon request.  
Prices may vary.*

### Eco-friendly

Dura-Trac® SE and SB charcoal panels are constructed with more than **50% recycled material**.

*All Panels are 100% Recyclable.*

 *Made in the USA.*



888-828-9535

DuraTrac.net | info@DuraTrac.net